

CATALOGUE

# Matrix

WALK-IN COLD ROOMS



ColdKit  
A Purever Company

# Walk-In Cold Rooms



## MATRIX - WALK-IN COLD ROOMS

ColdKit is the most innovative and comprehensive manufacturer within the catering industry.

Committed investment in R&D, technological innovation and new production facilities, ColdKit's range of products is today larger than ever and gives solutions to any professional catering need with top quality products and durability together with a superb variety of finishes tailored to customers individual requirements.

Today, ColdKit offers a wide variety of solutions aimed for hotels, restaurants, all kitchens, public venues, food franchises, supermarkets, food logistics and agro-food industry.

### ColdKit's range of products includes:

- Linx, a selection of neutral furniture in stainless steel
- Dubhe, cold storage and freezer cabinets
- Mizar, counter refrigerators
- Nassau, Bali and Saona, modular bars and display cabinets for pastries, bakeries and cafeterias
- Araya all-purpose showcase
- Calabria display cabinets for pastry
- Bread displays
- Fish displays
- Alyat full range of self service equipment
- Matrix cold rooms
- Isark mini cold rooms
- Industrial foodsafe panel for agroalimentary purposes
- A range of insulated and service doors

ColdKit offers a wide range of products for professional kitchens, food storage and display in hotels, restaurants, pastisseries, bakeries, food franchisings, supermarkets, cold logistics and to all the agroalimentary industry.

ColdKit has a professional distribution network with solid experience developing complete catering projects. If you are interested in learning more about our solutions, log on to our website or contact us and by return one of our certified specialists in your area will be in touch with you.

All our products have been design for professional performance, using high quality components and strict production techniques. On top of this and due to our quality processes, ColdKit Ibérica, our mother factory, has been awarded with the ISO 9001 certification.

Now, ColdKit's products are manufactured in modern facilities in Spain, Portugal, France, Brazil and India.

For more information, visit [www.coldkit.com](http://www.coldkit.com)



Adding to the ISO 9001 certification, ColdKit Ibérica is the only manufacturer in this field to have been awarded with the Controlvet certification for the quality and hygiene of its products, procedures and facilities, in accordance to the current sanitation rules.

Controlvet is certified by the Portuguese Certifying Institute, no LO224-1, has more than 10 years of experience and is specialized in certifying companies related to the food industry, with more than 1500 satisfied clients.

## CONTENTS

• What is Matrix? .....	03
• Key Features Differentiating Matrix from Other Similar Products .....	04
• Panels .....	05
• Doors .....	05
• Floors .....	05
• A Full Range of Options & Accessories .....	06
• Environmental Responsibility .....	07

## WHAT IS MATRIX?

**Matrix** is an innovative full range of modular walk-in coldrooms with significant advantages over conventional coldrooms.

Is the result of an R&D project involving experienced professionals from various different countries.

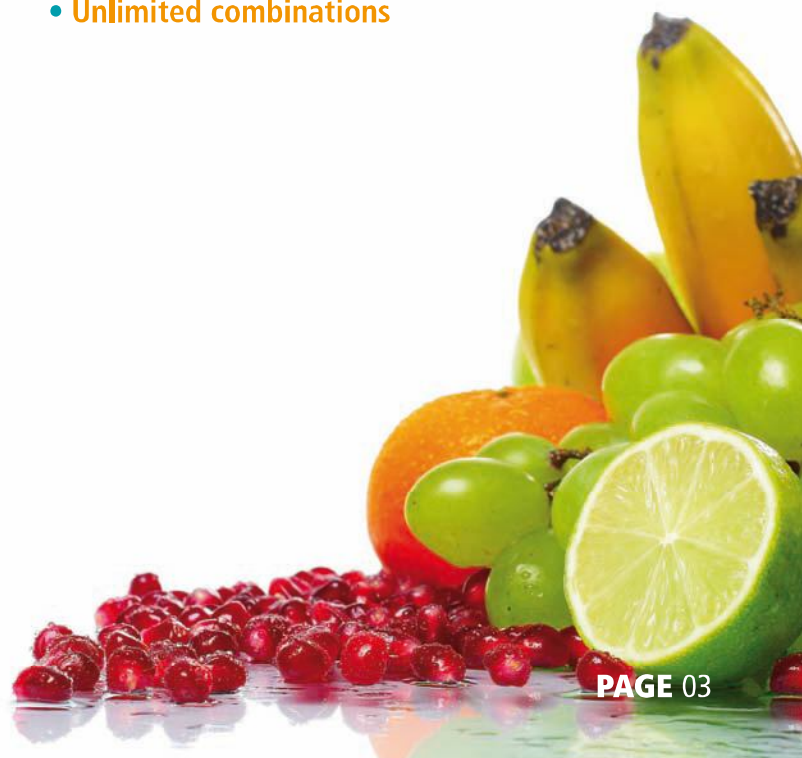
It provides optimal options for storing food in **hotels, restaurants, catering services, supermarkets and industrial kitchens, among others.**



## ADVANTAGES



- Complete modularity in 20 by 20 cm for Matrix 60, 85 and 105. For the 150 cold room it is 40 by 40 cm
- Exclusive design
- Easy assembly
- Plain Grey exterior and White interior
- Rounded corners
- Unlimited combinations





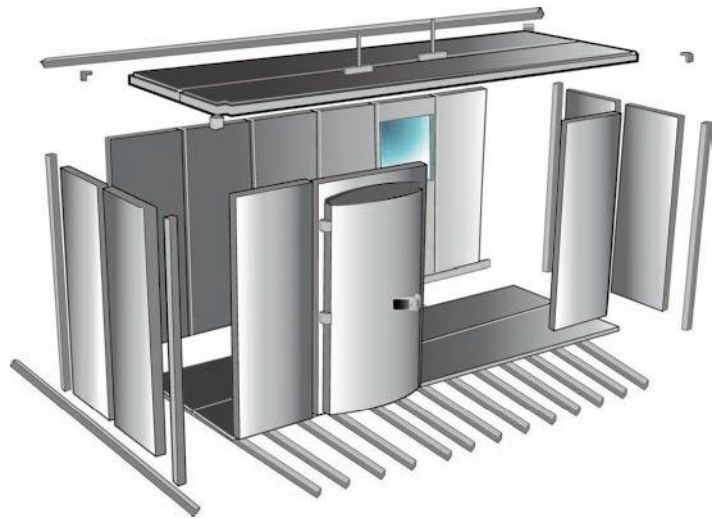
## KEY FEATURES DIFFERENTIATING MATRIX FROM OTHER SIMILAR PRODUCTS

### COMPLETE MODULARITY

**Matrix** was conceived to be adaptable to almost any situation and configuration.

Unlimited combination and configurations are possible thanks to the MATRIX architecture based on modules that can be extended in 20cm increments in all three dimensions (height, width and depth).

The MATRIX modular concept also applies to a well achieved, easy to assemble partition system, allowing one coldroom to be split into different areas for different products and temperature environments, according to the specific needs of each customer and usage.



### EASY ASSEMBLY

Due to its modern kit architecture, MATRIX coldrooms are very easily assembled, in a surprisingly short time. The assembly process is totally clean, all that is needed is to unite two catches inserted in the panels and requires no cuts in the panels.

In a short period of time the new coldroom is ready for operation without interfering with the activities in the surrounding areas.

### EXCLUSIVE DESIGN

A quick glance at a **MATRIX** coldroom is sufficient to appreciate its new, improved design. Its most noticeable are:

- **DOOR:** A symbol of its modern design and a symbol of the brand.
- **COLOUR:** MATRIX puts an end to monotonous white coldrooms. The smooth, carefully finished modules have an elegant grey exteriors, blends in with other kitchen equipment, and a clean white interior.
- **CORNERS:** All corners are rounded inside and outside. Components are made with high-quality, durable, easy to clean materials and reduces accumulation of bacteria.



SMOOTH STAINLESS STEEL



SMOOTH ASH RAL 9006



SMOOTH WHITE REF 1006

### FEATURES



The combination of these two features gives the MATRIX range three key advantages:

- Maximum usage of the space available for the coldroom.
- The possibility to easily dismantle the coldroom and move it to a different location.
- The coldroom can easily be expanded or its configuration can be modified without turning it off or removing the stored goods.



## PANELS

The **Matrix** range consists of four thicknesses (60, 85, 105 and 150mm) with different insulations for different applications. The result is a perfect balance between adequate cold storage and power consumption.

## DOORS

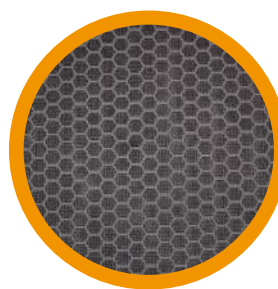
With the same modular architecture and the same simple assembly process, **MATRIX** offers a wide range of doors in many dimensions: **sliding**, and **hinged doors**, as well as **glass display doors**, **windows** and **strip doors**.



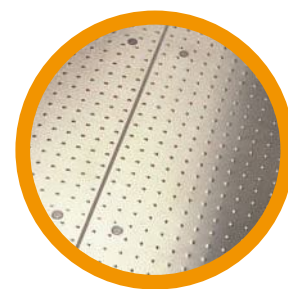
## FLOORS

**MATRIX** can be supplied in a wide range of antislip floors that make it adaptable to different loads, including intensive forklift truck traffic.

The standard floor has a phenolic resin finish, although top-quality stainless steel floors are also available.



PHENOLIC RESIN  
NON-SLIP



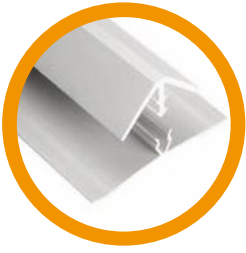
STAINLESS STEEL  
NON-SLIP

# Walk-In Cold Rooms



## A FULL RANGE OF OPTIONS & ACCESSORIES

All accessories meet food-industry hygiene standards and are certified by **CNERPAC**.



COVING SECTION



STRIP CURTAINS



INTERNAL & EXTERNAL SKIRTING



SHELVING WITH ALUMINIUM STRUCTURE AND POLYETHYLENE SHELVES

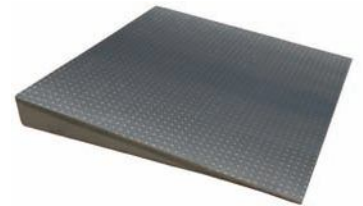


### options:

A variety of accessories are available as well, such as floor skirting, coving sections, silicon sealants, pressure balancing valves, lighting, temperature control, and access ramps, among others.



PRESSURE BALANCING VALVE



RAMPS



MONOBLOC UNIT



PANELS WITH WINDOWS



## ENVIRONMENTAL RESPONSIBILITY

**Environmental responsibility** is no longer simply a business image strategy.

Today it is as important as other economic and social sectors, when evaluating profit accounts and the company's position in the market.

**ColdKit** contributes to sustainable development and acknowledges that this contribution generates confidence for customers, the market and the company in general.

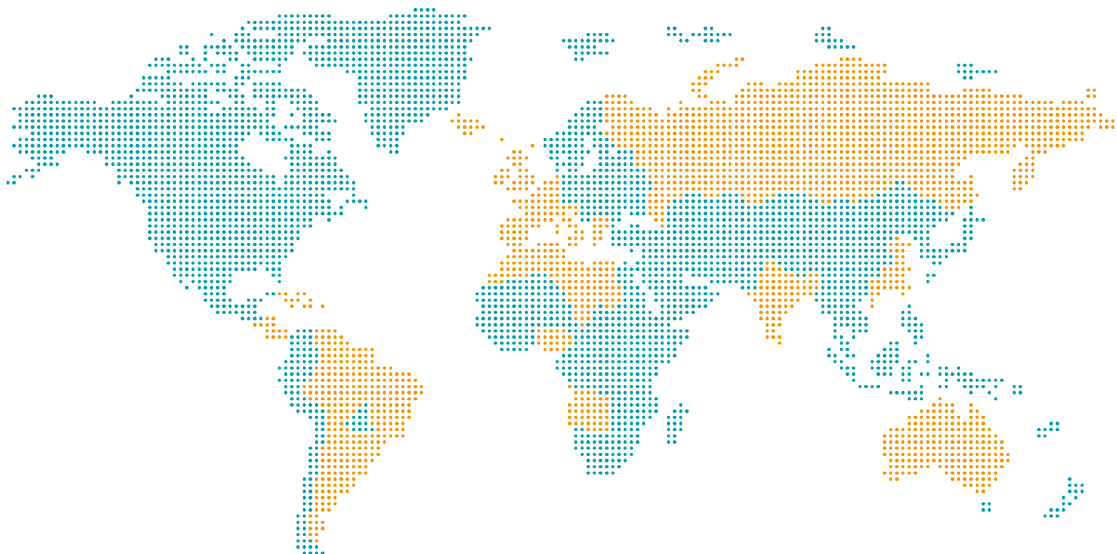
We have developed significant work in the field of R&D, and a notable investment in non-polluting technology, which enables it to comply with the Kyoto protocol.



## EFFICIENT LOGISTICS

**ColdKit** has been able to build up a decentralised European distribution network, which makes it easy to fill all of its customers' orders quickly and efficiently with reduced transportation costs.

We have a wide distribution network throughout the Iberian Peninsula, Europe and the rest of the world.





# ColdKit

[info@coldkit.com](mailto:info@coldkit.com)

**“Protecting what matters most”**

#### **INTERNATIONAL SALES**

##### **ColdKit Ibérica**

Factory  
Lugar do Poço Forrado - Apartado 7  
3521-909 Zona Industrial de Nelas  
Portugal  
T +351 232 941 280  
F +351 232 949 370  
[info@coldkit.com](mailto:info@coldkit.com)

#### **UNITED KINGDOM**

##### **ColdKit UK**

Unit 3 Stewart Road  
Kingsland Business Park  
Basingstoke  
Hampshire RG24 8NF  
T +44 01256 811 400  
F +44 01256 810 200  
[wquail@coldkit.com](mailto:wquail@coldkit.com)

#### **IRELAND**

##### **ColdKit Ireland**

Greenogue Business Park  
Unit 400 BTI House  
Rathcoole - Co. Dublin  
T +353 1 4010164  
F +353 1 4010184  
[info,ireland@coldkit.com](mailto:info,ireland@coldkit.com)